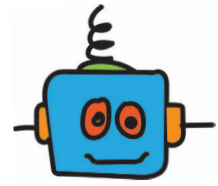


To



Handwriting practice lines consisting of multiple sets of three horizontal lines: a solid top line, a dashed middle line, and a solid bottom line.

From

Handwriting practice lines for the 'From' field, consisting of three horizontal lines: a solid top line, a dashed middle line, and a solid bottom line.



To

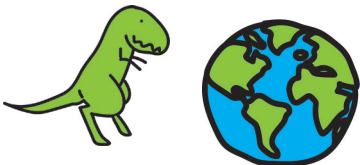


A large rectangular box with a black border, intended for writing the recipient's name and address.

Four sets of handwriting lines, each consisting of a solid top line, a dashed middle line, and a solid bottom line, for practicing letter formation.

From

Two sets of handwriting lines, each consisting of a solid top line, a dashed middle line, and a solid bottom line, for practicing letter formation.



To



Handwriting practice lines consisting of multiple sets of three horizontal lines: a solid top line, a dashed middle line, and a solid bottom line.

From



To

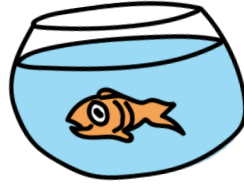


Large empty rectangular box for writing the message.

From



To



From





To

From

